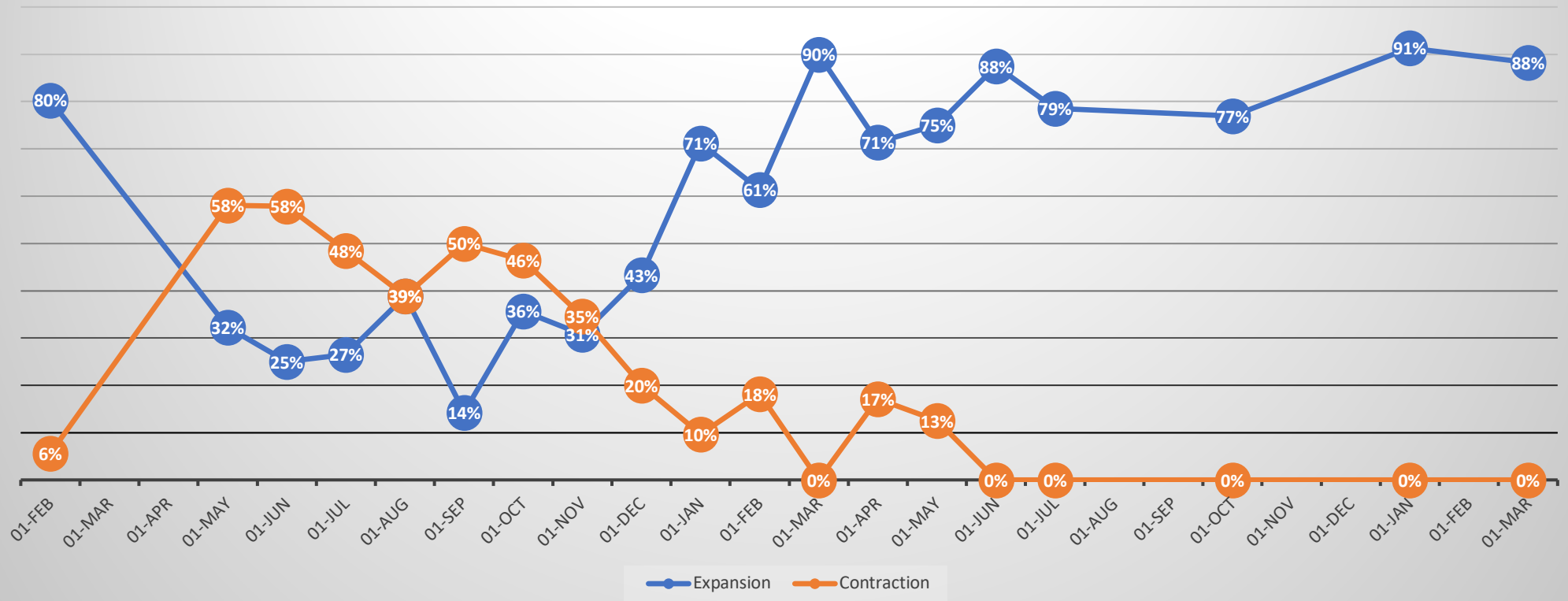


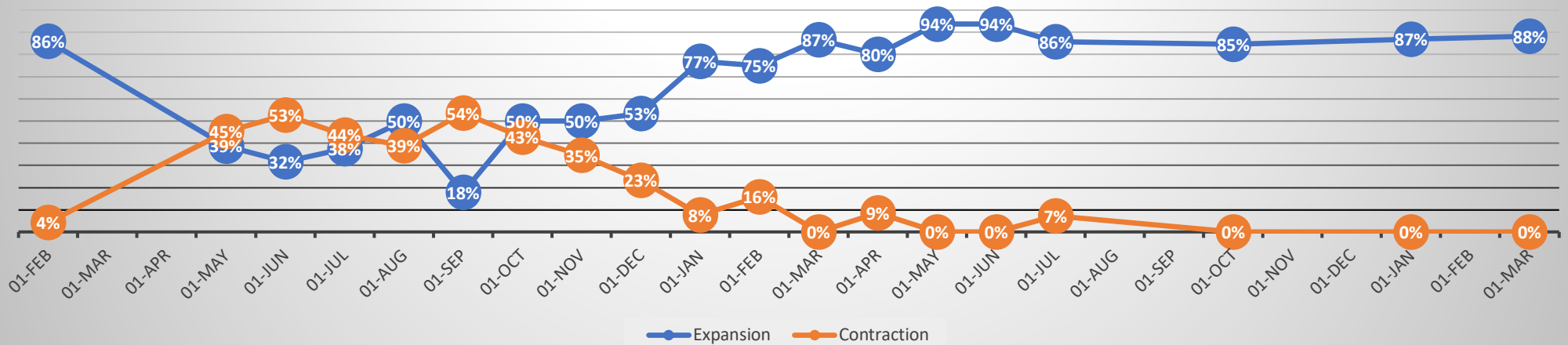


**Quarterly tracker of 17 CEOs and C-Suite members at mid-sized professional services firms
conducted on 25 March 2022 as part of the 'Re-tuning your firm' show.**

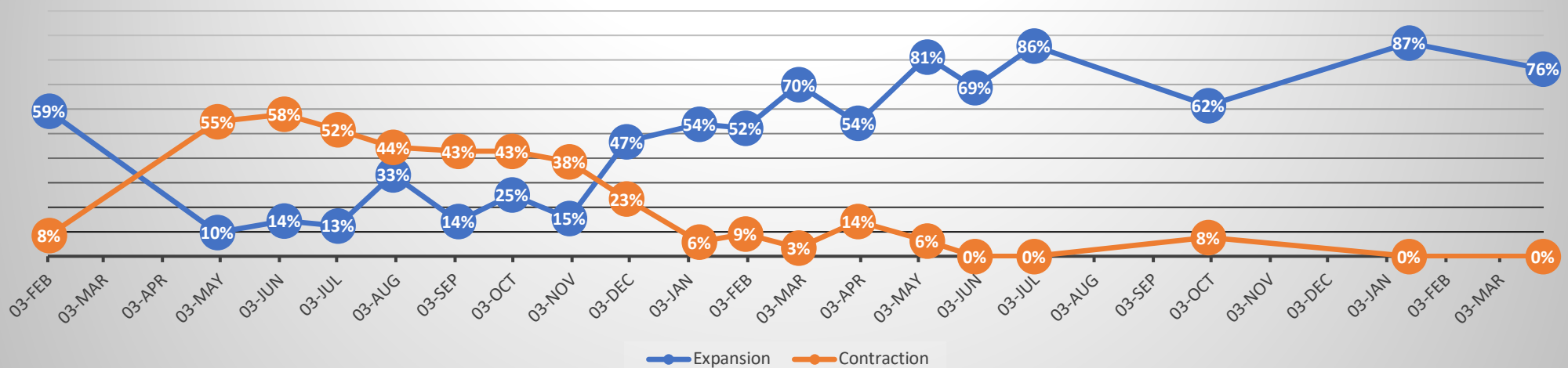
Do you expect to expand or contract the level of activity at your firm over the next year?



Do you expect to expand or contract the flow of new work to your firm over the next year?

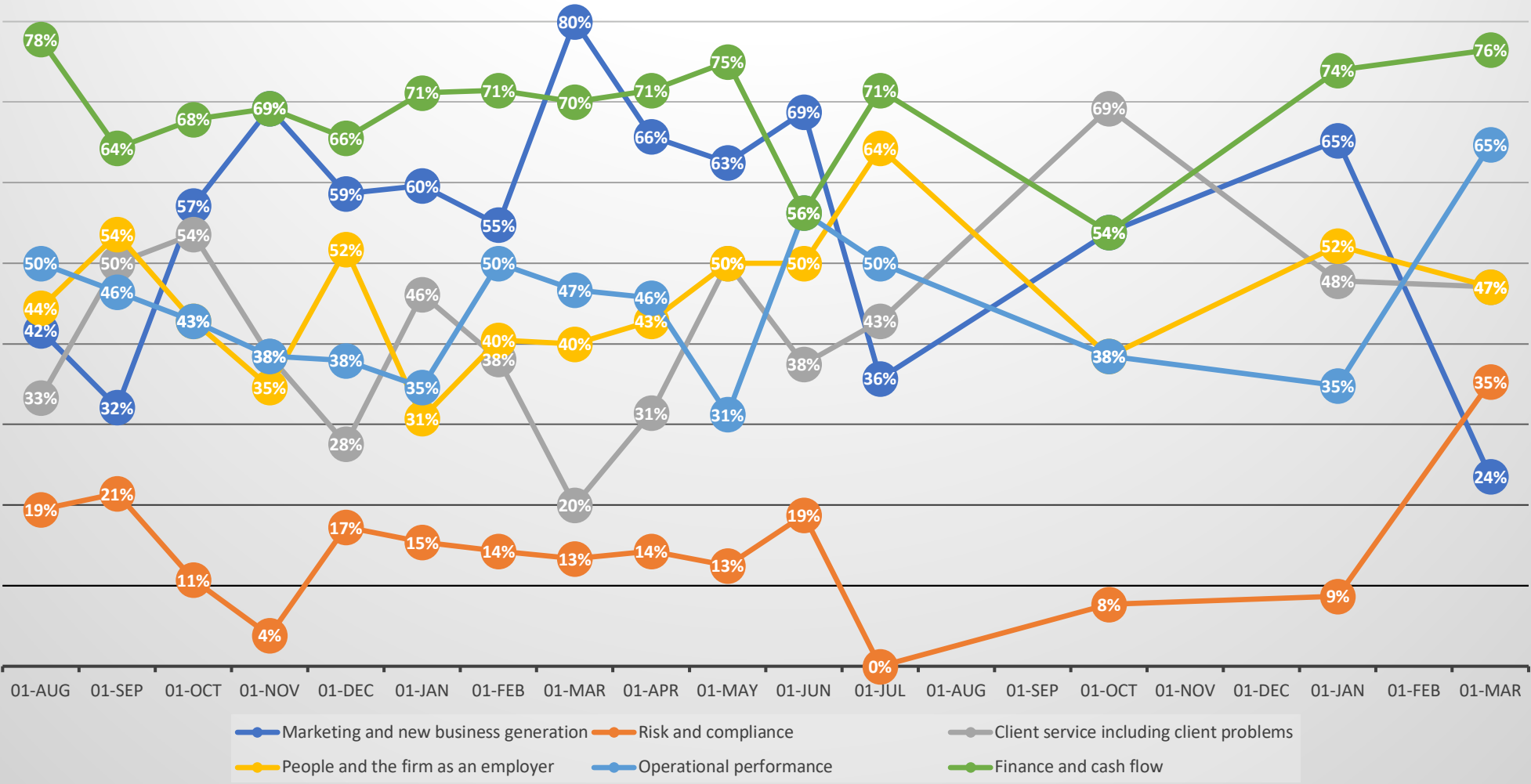


Do you expect to expand or contract the headcount of your firm over the next year?



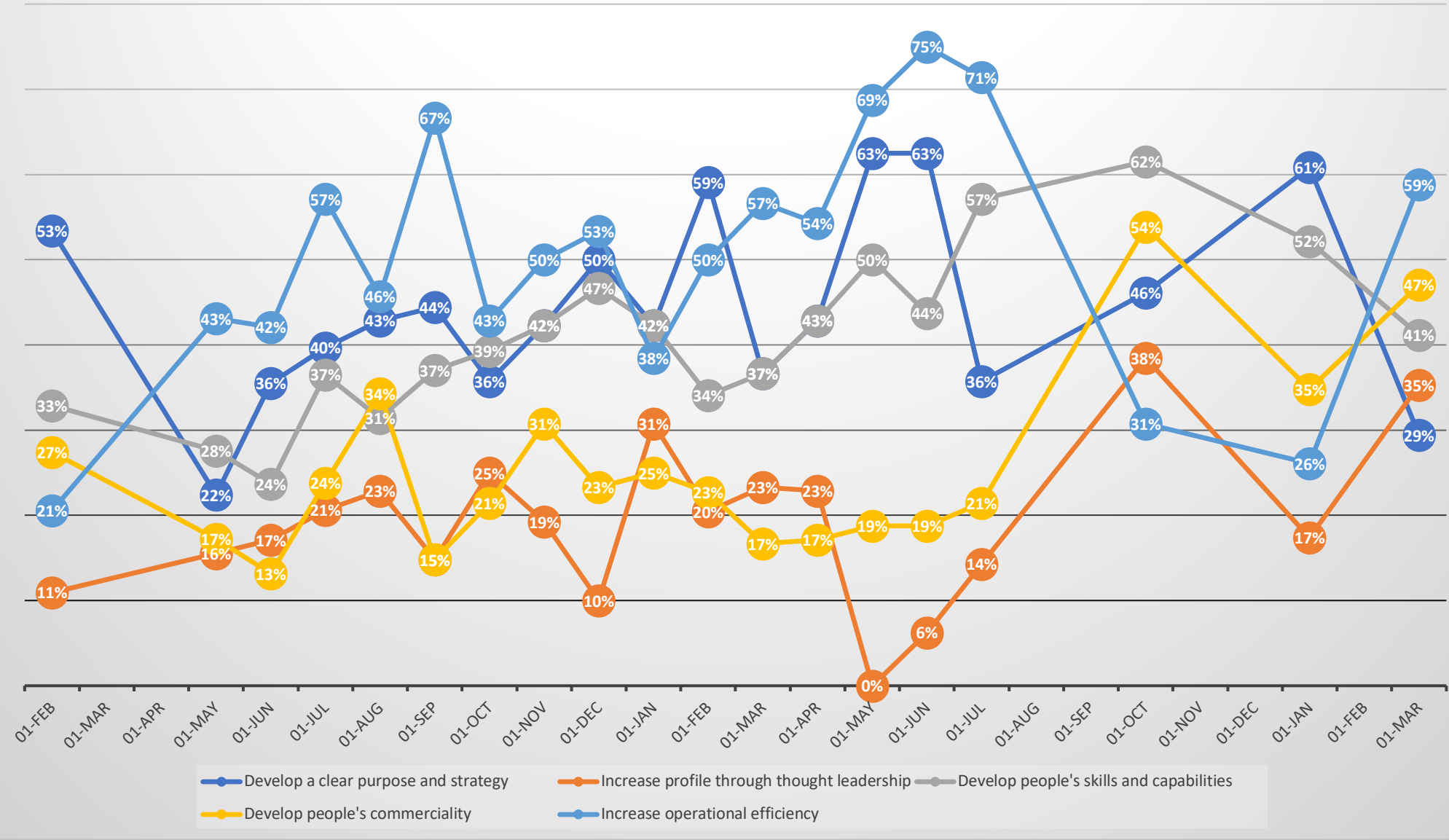
The content of this summary can be used freely without limit, provided reference is made to the Managing Partners' Forum 'Re-tuning your Firm' show ©2022 Practice Management International LLP

Which are the THREE areas that normally carry the most weight during partner/director discussions?



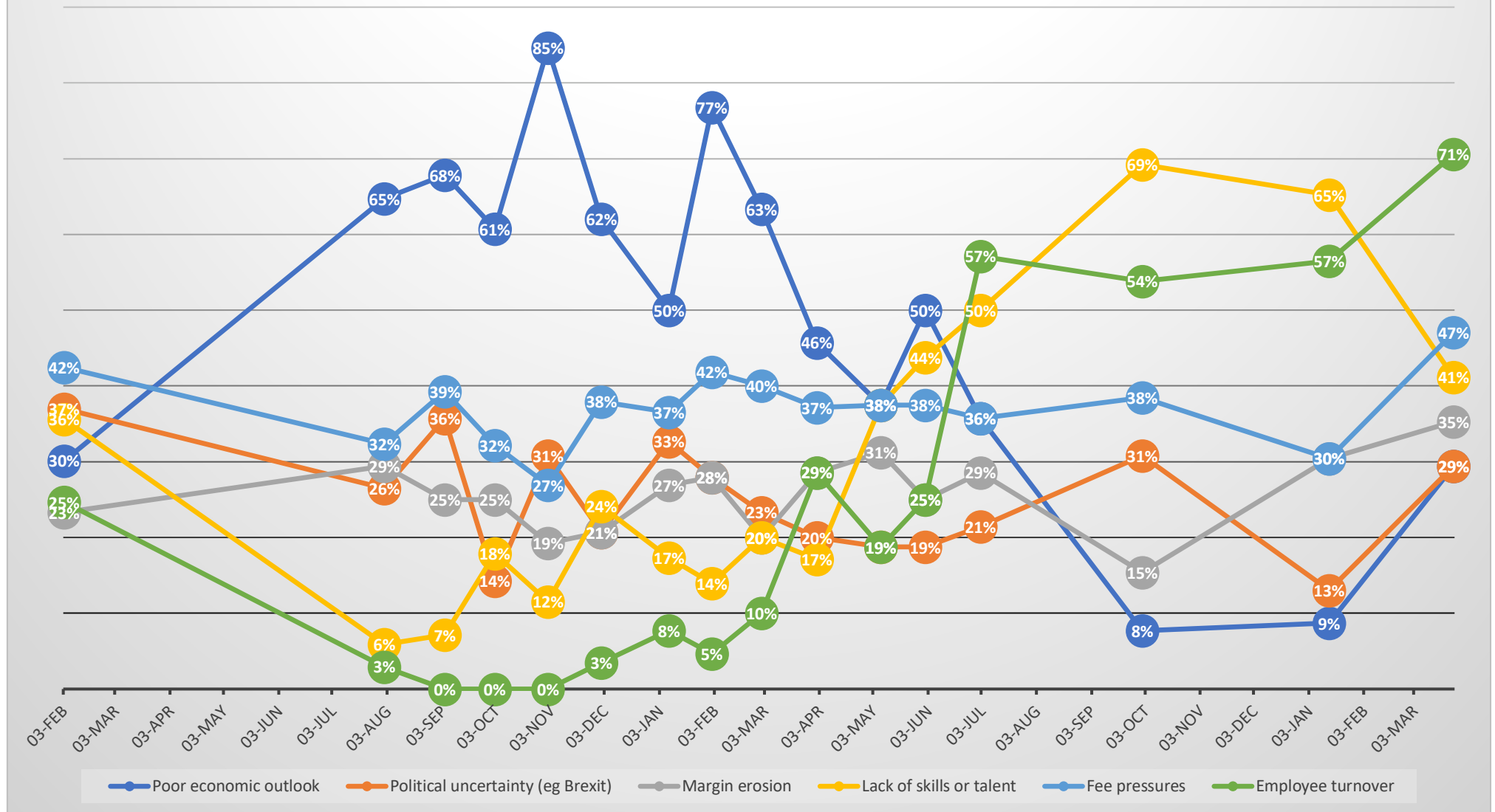
The content of this summary can be used freely without limit, provided reference is made to the Managing Partners' Forum 'Re-tuning your Firm' show ©2022 Practice Management International LLP

Select the THREE top priorities for your firm over the next twelve months



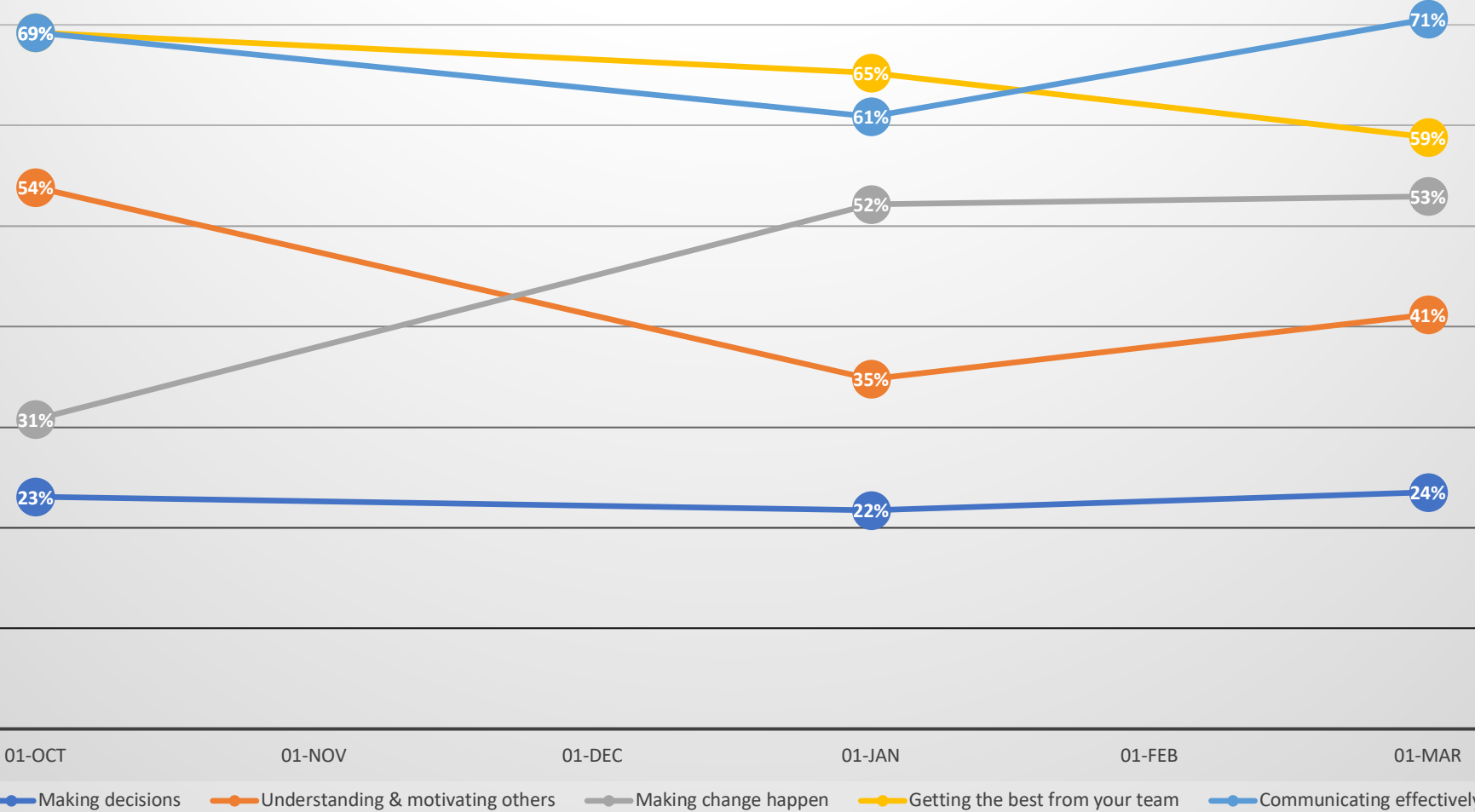
The content of this summary can be used freely without limit, provided reference is made to the Managing Partners' Forum 'Re-tuning your Firm' show ©2022 Practice Management International LLP

Which are the THREE constraints that are most preventing your firm from achieving optimal performance in the current economic climate?



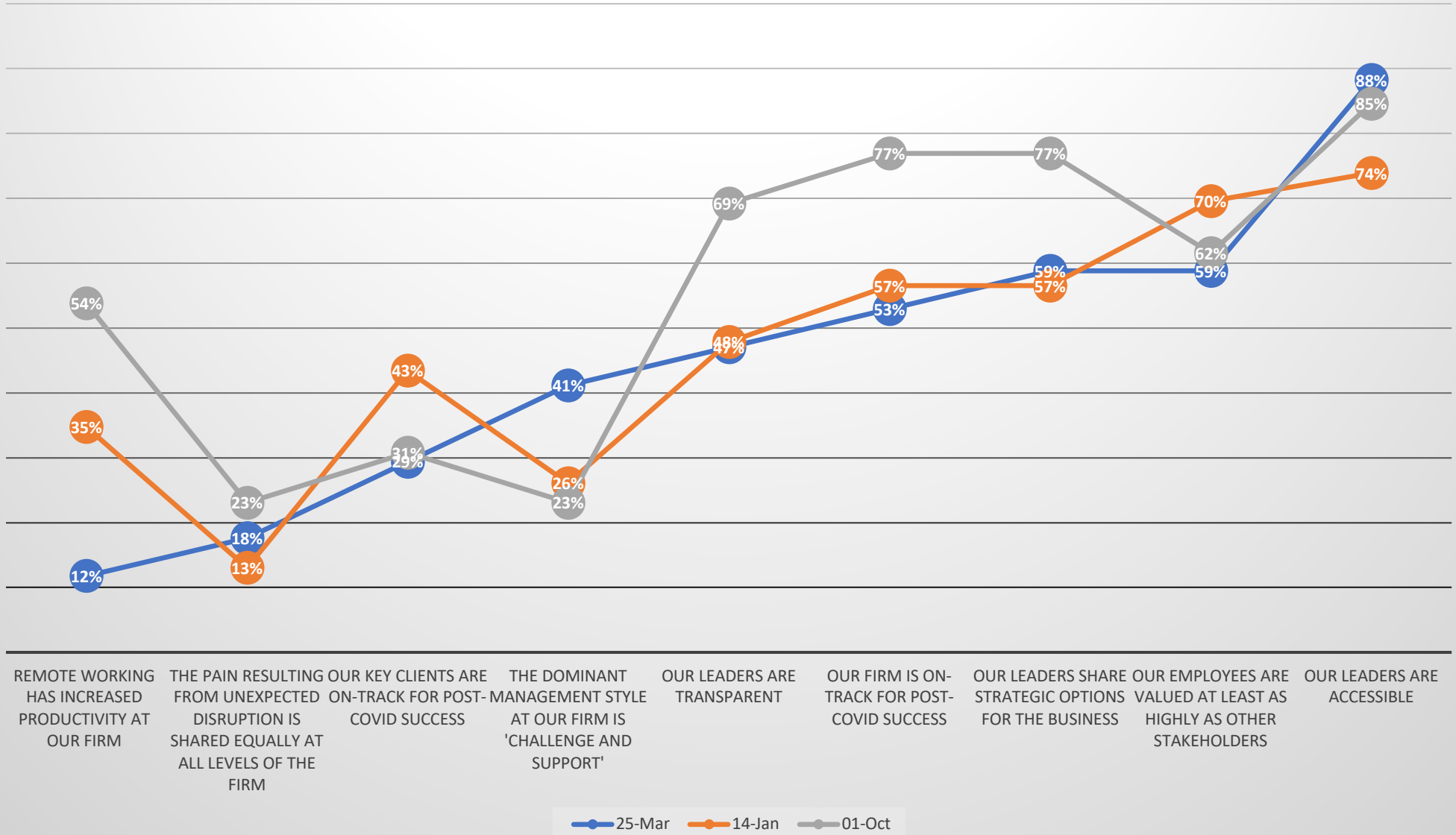
The content of this summary can be used freely without limit, provided reference is made to the Managing Partners' Forum 'Re-tuning your Firm' show ©2022 Practice Management International LLP

Which THREE management activities do you consider will contribute most to helping your firm achieve its goals?



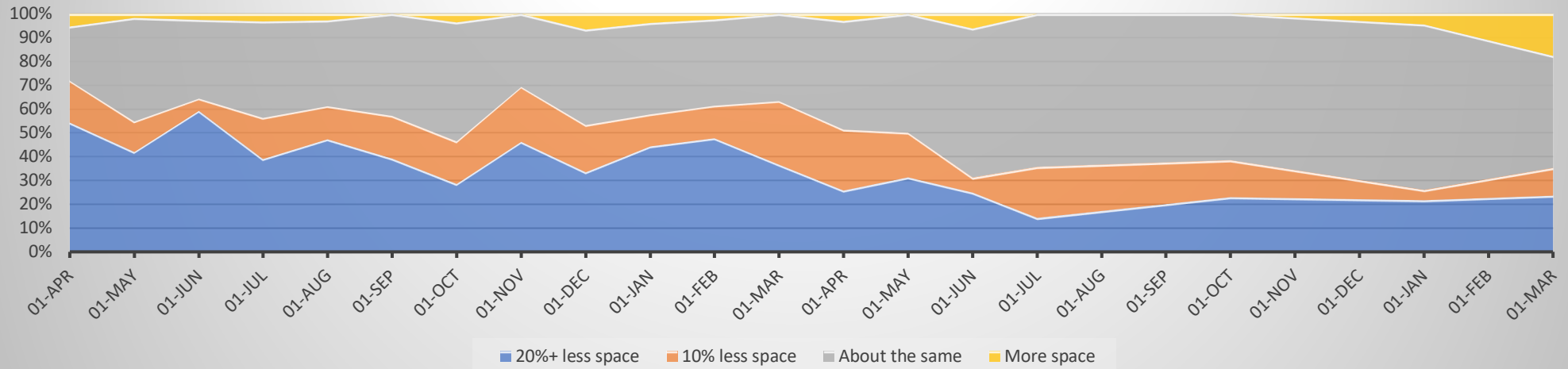
The content of this summary can be used freely without limit, provided reference is made to the Managing Partners' Forum 'Re-tuning your Firm' show ©2022 Practice Management International LLP

Which of these statements are true for your firm?

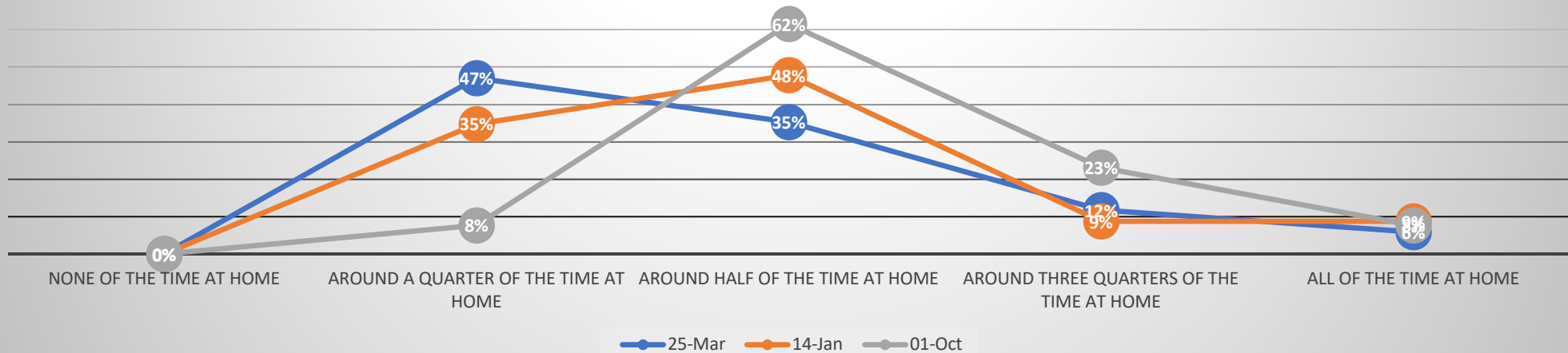


The content of this summary can be used freely without limit, provided reference is made to the Managing Partners' Forum 'Re-tuning your Firm' show ©2022 Practice Management International LLP

Do you anticipate changes to your office space requirements over the next year?



On average, how much of the time are your people likely to be working from home over the next year?



The content of this summary can be used freely without limit, provided reference is made to the Managing Partners' Forum 'Re-tuning your Firm' show ©2022 Practice Management International LLP