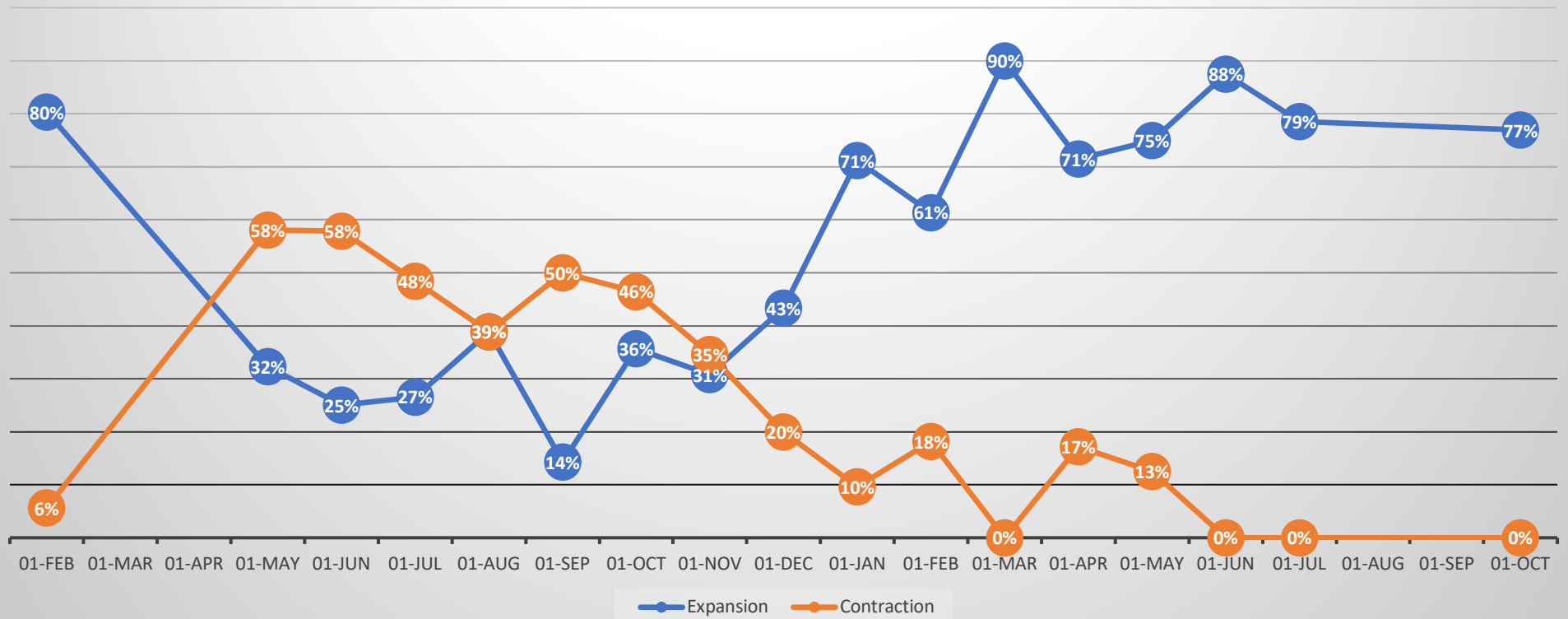




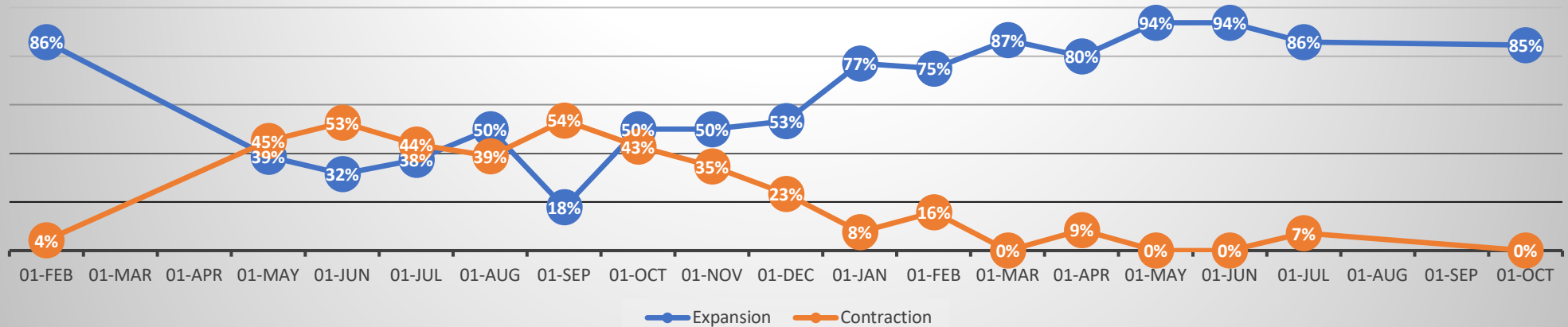
Monthly tracker of 13 CEOs and C-Suite members at mid-sized professional services firms conducted on 1 October 2021 as part of the 'Re-tuning your firm' UK show.

### Do you expect to expand or contract the level of activity at your firm over the next year?

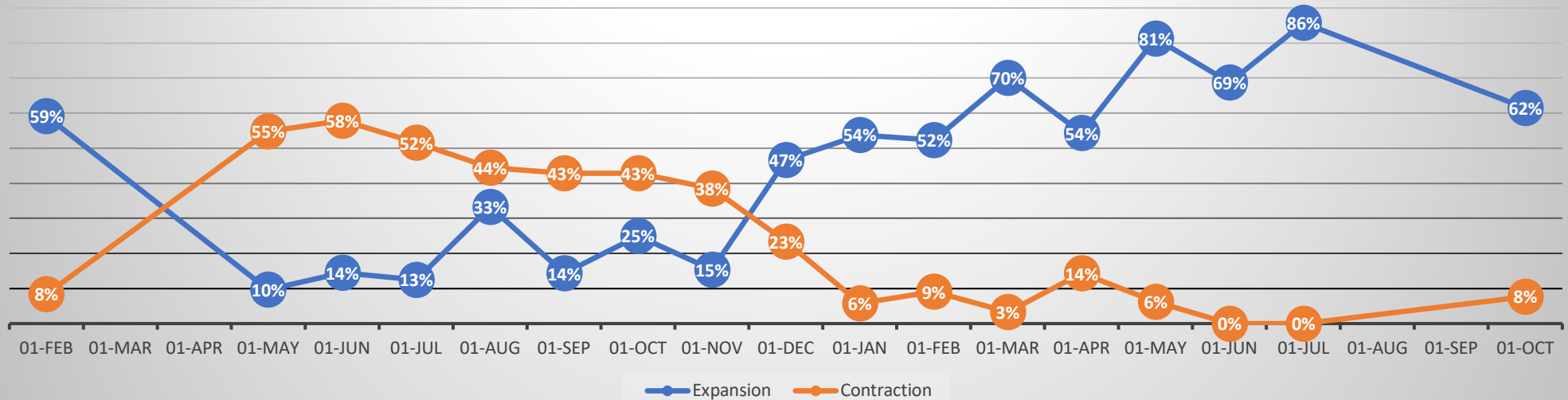


The content of this summary can be used freely without limit, provided reference is made to the Managing Partners' Forum 'Re-tuning your Firm' UK show ©2021 Practice Management International LLP

## Do you expect to expand or contract the flow of new work to your firm over the next year?

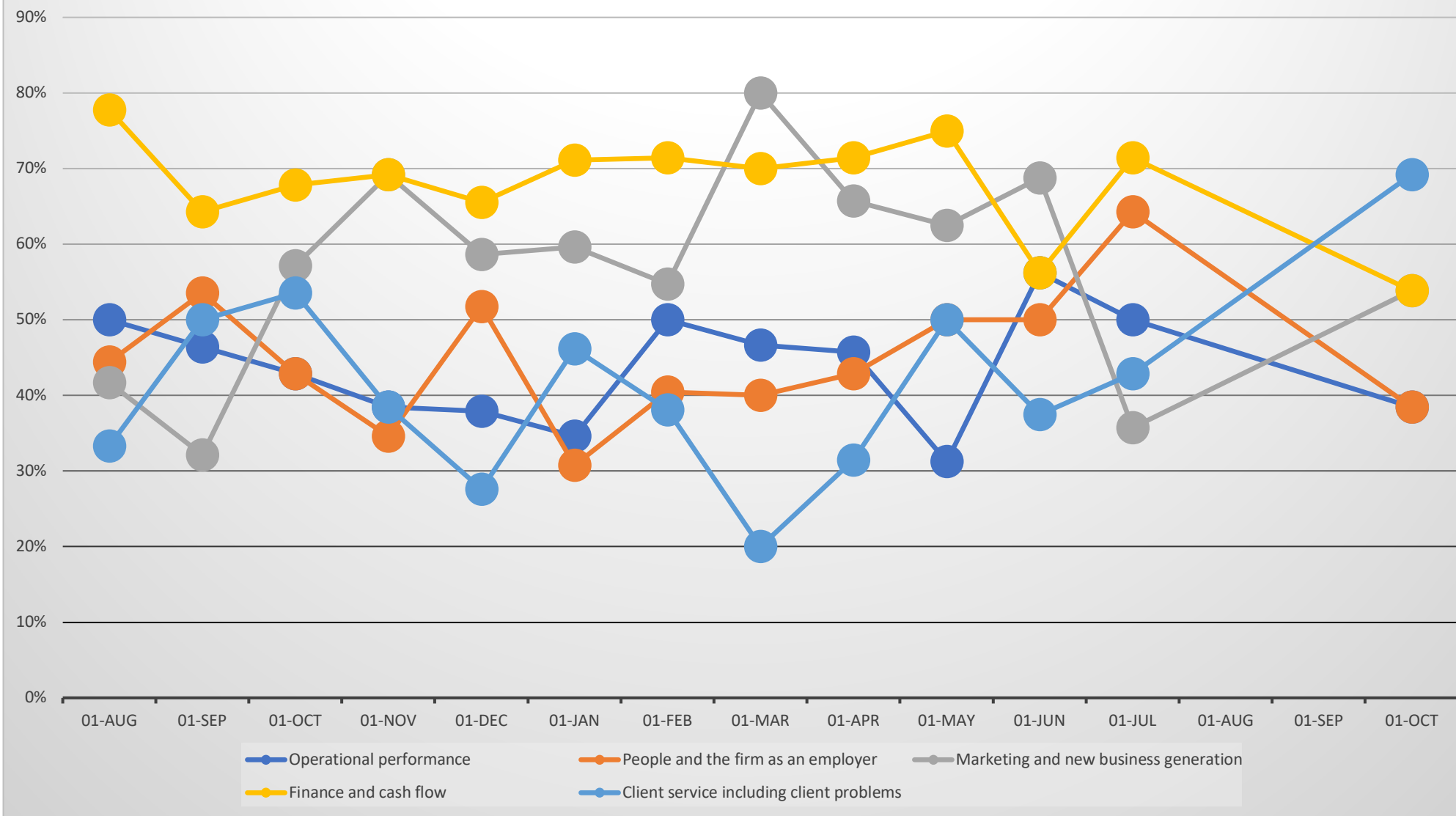


## Do you expect to expand or contract the headcount of your firm over the next year?



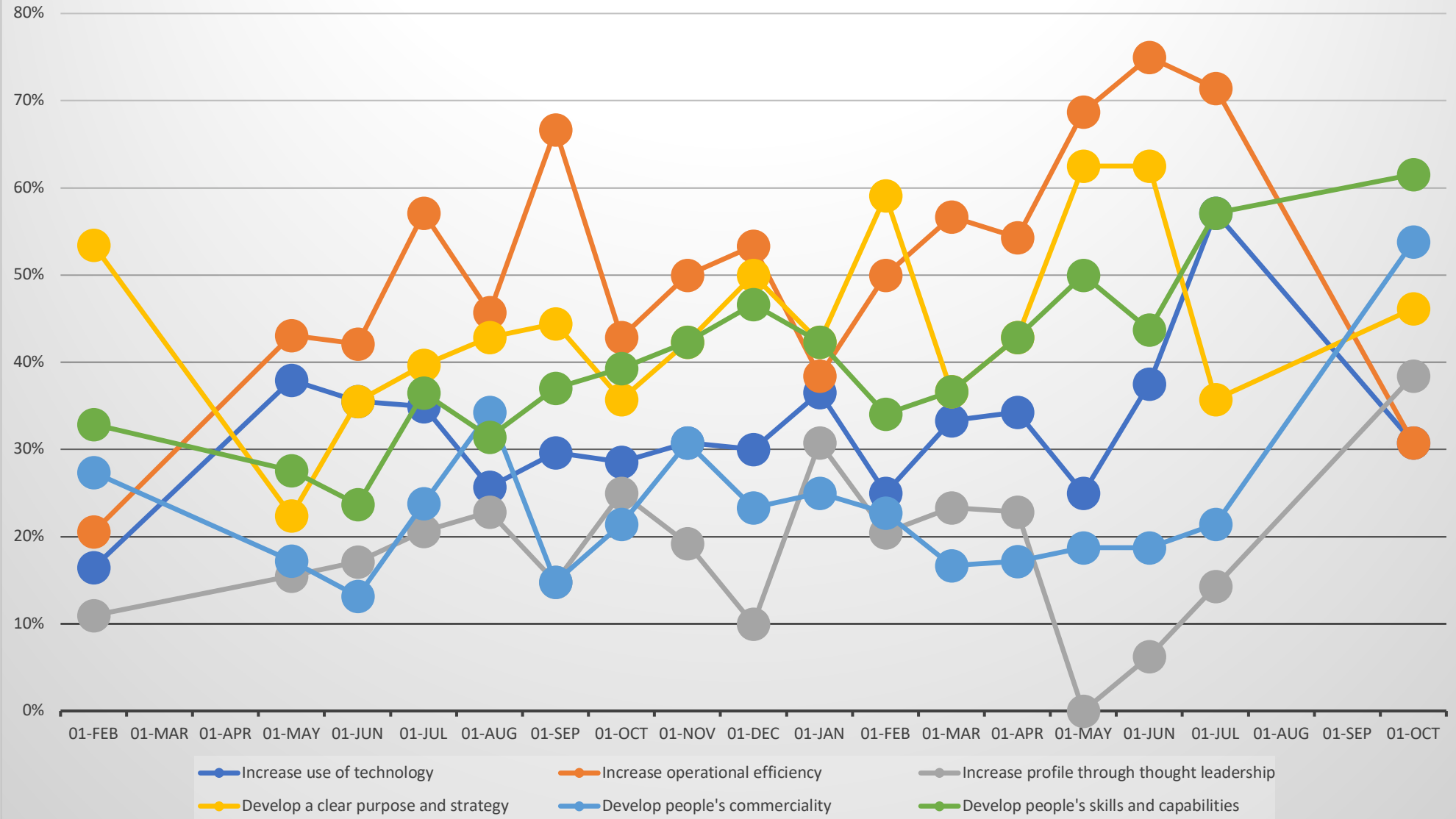
The content of this summary can be used freely without limit, provided reference is made to the Managing Partners' Forum 'Re-tuning your Firm' UK show ©2021 Practice Management International LLP

## Which are the THREE areas that normally carry the most weight during partner/director discussions?



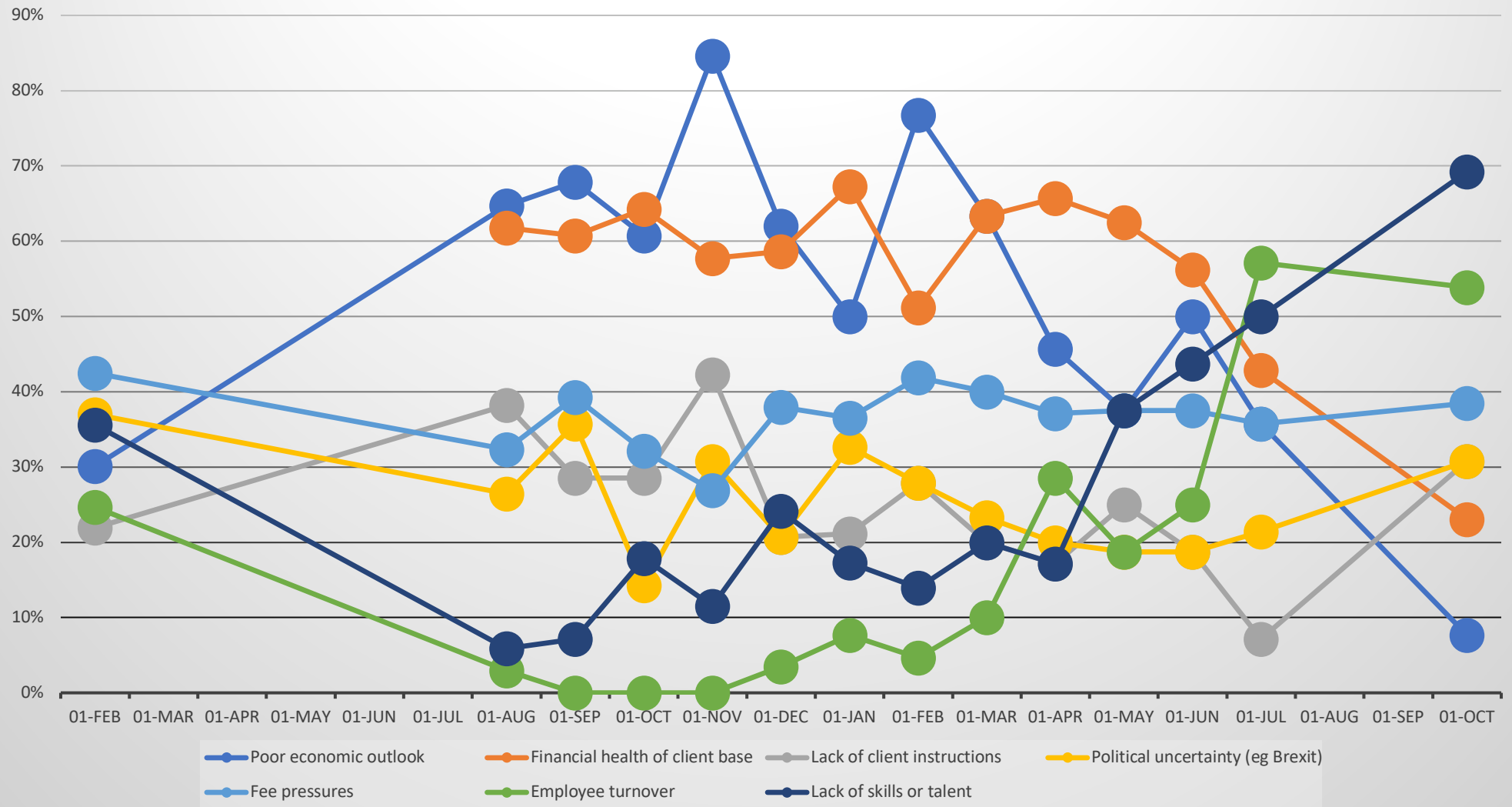
The content of this summary can be used freely without limit, provided reference is made to the Managing Partners' Forum 'Re-tuning your Firm' UK show ©2021 Practice Management International LLP

## Select the THREE top priorities for your firm over the next twelve months



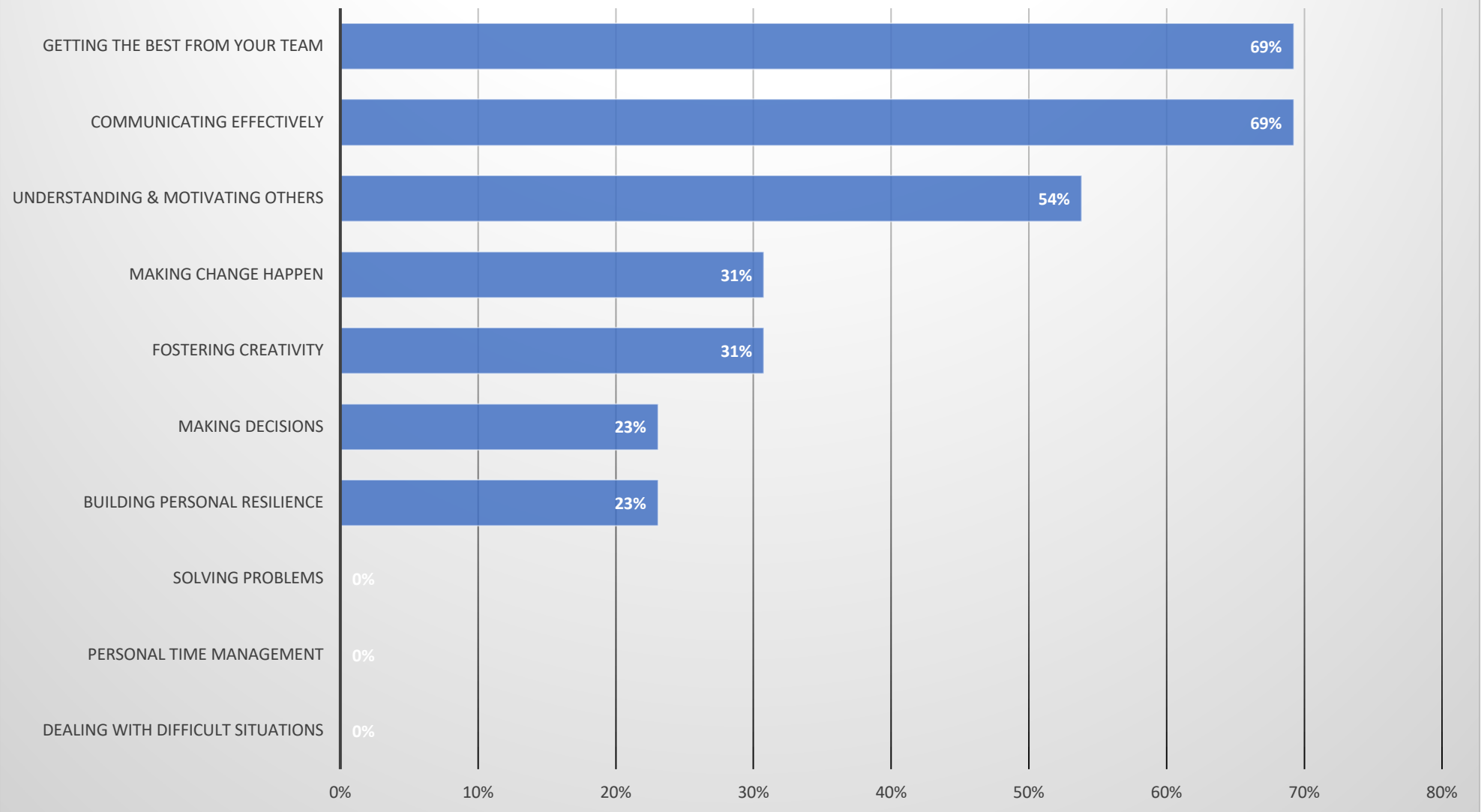
The content of this summary can be used freely without limit, provided reference is made to the Managing Partners' Forum 'Re-tuning your Firm' UK show ©2021 Practice Management International LLP

## Which are the THREE constraints that are most preventing your firm from achieving optimal performance in the current economic climate?



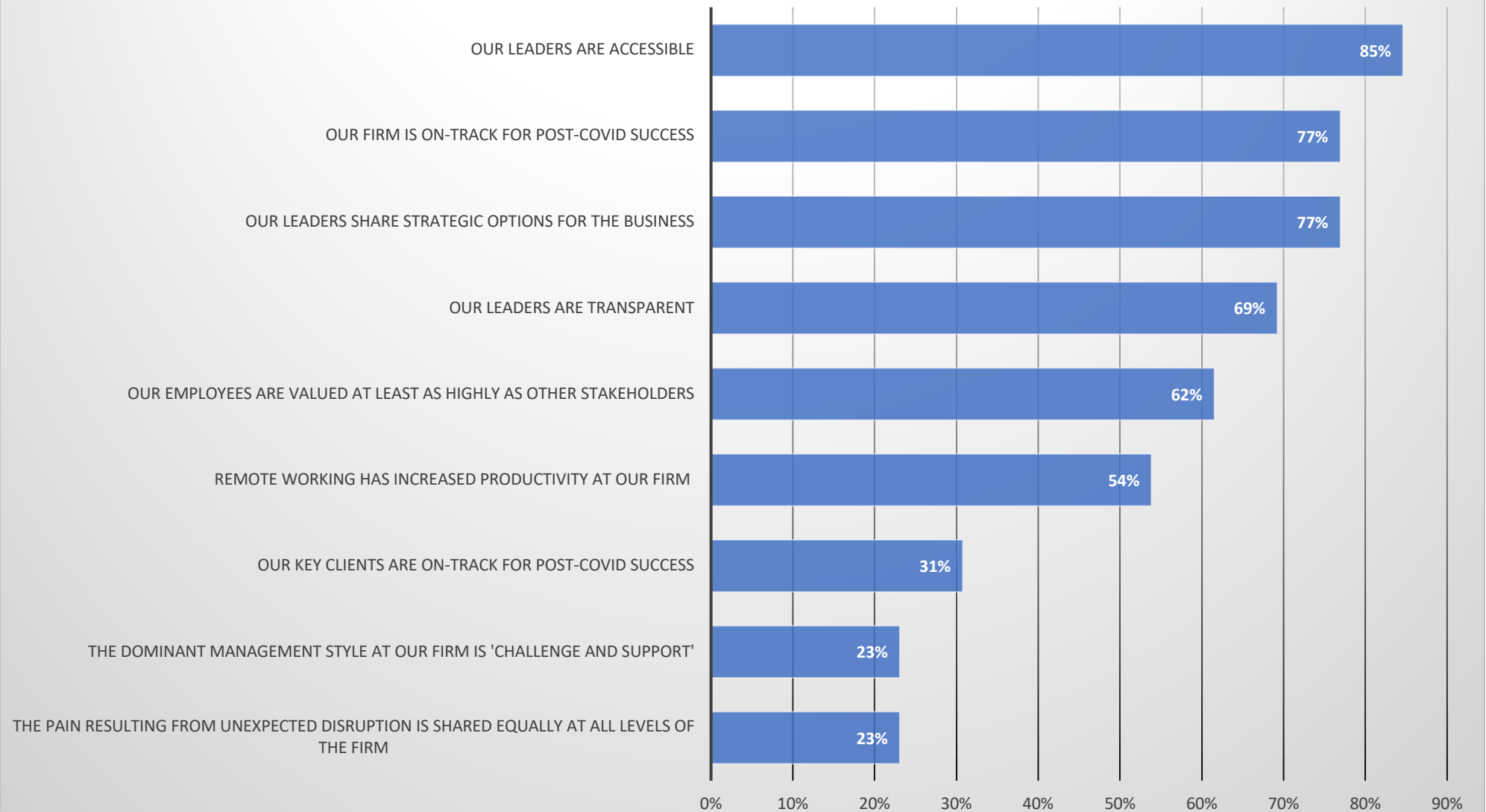
The content of this summary can be used freely without limit, provided reference is made to the Managing Partners' Forum 'Re-tuning your Firm' UK show ©2021 Practice Management International LLP

## Which THREE management activities do you consider will contribute most to helping your firm achieve its goals?



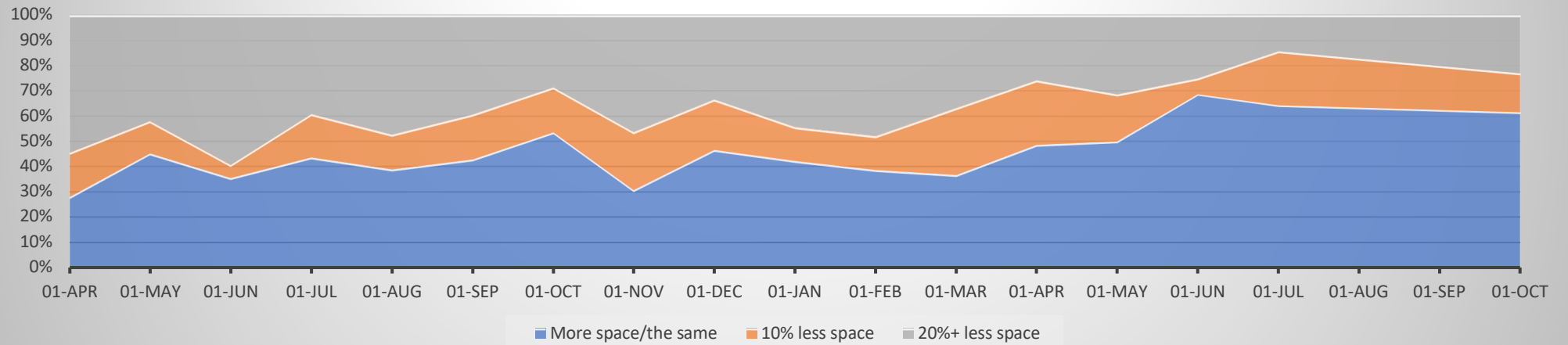
*The content of this summary can be used freely without limit, provided reference is made to the Managing Partners' Forum 'Re-tuning your Firm' UK show ©2021 Practice Management International LLP*

## Which of these statements are true for your firm?

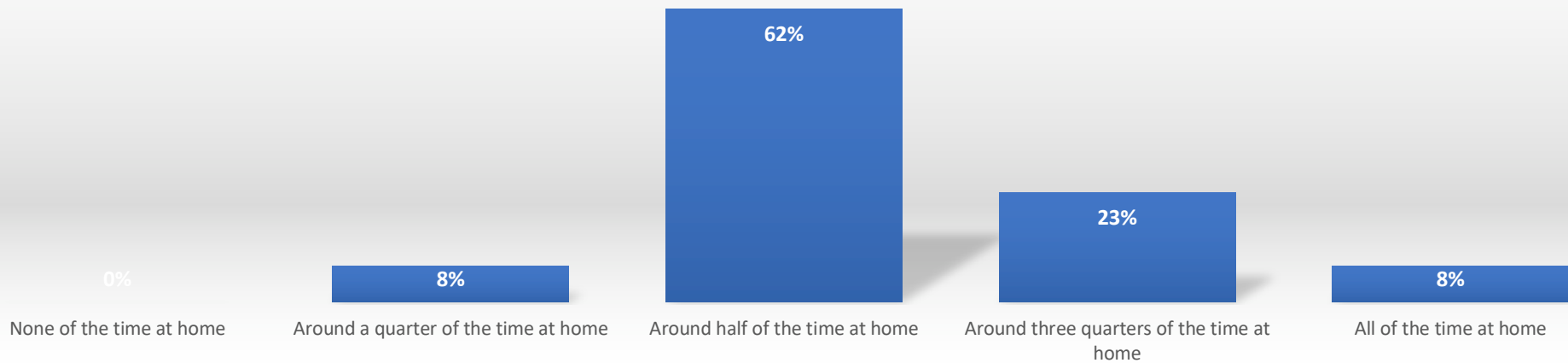


*The content of this summary can be used freely without limit, provided reference is made to the Managing Partners' Forum 'Re-tuning your Firm' UK show ©2021 Practice Management International LLP*

## Do you anticipate changes to your office space requirements over the next year / when the pandemic eases?



## On average, how much of the time are your people likely to be working from home over the next year?



The content of this summary can be used freely without limit, provided reference is made to the Managing Partners' Forum 'Re-tuning your Firm' UK show ©2021 Practice Management International LLP